



# Calendar of Events

Published by the Albuquerque Museum Foundation

SEPTEMBER/OCTOBER 2025



## Albuquerque Museum

2000 Mountain Road NW,  
Albuquerque, NM 87104  
(505) 243-7255 | [albuquerquemuseum.org](http://albuquerquemuseum.org)

## Museum Hours:

Tuesdays-Sundays 9 a.m.-5 p.m.

  @abqmuseum

Acoma Pueblo Enchanted Dancers performing  
at Casa San Ysidro's annual fall celebration in  
partnership with the Village of Corrales,  
featuring heritage craft demonstrations, live  
music, and cultural performances.



# PROGRAMS & EVENTS

All Events Are Free Unless Otherwise Noted

SUNDAY, SEPTEMBER 14, 2 P.M.

## Talk: Writing Under Facism

Inspired by the exhibition, *Modern Art and Politics in Germany, 1910-1945*, Albuquerque poet and social analyst Margaret Randall explores the ways in which writers in different countries have borne witness to and chronicled state-imposed terrorism over the past seventy years. This lecture will include a reading of poems by diverse voices, with historic context provided by Randall, and a Q&A to follow.



Photo by Magdalena Lily McCarson

WEDNESDAYS OCTOBER 8 & 22, 11 A.M.

## Collections Spotlight: Women Photographers

Join us for an informative presentation that explores the contributions of women in photography from the Museum's collection. Led by museum guide Sarah Geiger, this presentation will highlight photographers whose images tell stories about people and celebrate the different perspectives, styles, and subjects they have captured.



Anne Nogge, Helen Harton with Gigi, 1984, gelatin silver print, Albuquerque Museum, gift of Anne Nogge, PC1984.58.1

THURSDAY, SEPTEMBER 18, 5-8:30 P.M.

## Third Thursday

Experience the world from a dog's perspective as Oliver Prezant and his band perform original songs and poetry inspired by his dog, Alex. Influenced by Shakespeare and everyday joys, the show features musicians Genevieve Leitner, Chris Ischi, Jerry Weimer, and Mark Clark. While pets are not allowed in the museum, service dogs are welcome, and visitors can bring photos of their dogs on their phones.



Oliver Prezant and his dog Alex,  
Photo by Ruthanne Greeley

Third Thursdays  
Funded By:



Albuquerque Museum  
FOUNDATION



American HOME  
- FURNITURE & MATTRESS -  
Premier Corporate Partner



THURSDAY, OCTOBER 16, 5-8:30 P.M.

## Third Thursday

Enjoy a special performance titled "Willkommen to the Kabarett" by the 3 on a Match International Kabarett Ensemble, inspired by *Modern Art and Politics in Germany 1910-1945*. Experience a night of music, mischief, and mayhem, featuring biting satire, dark humor, and memorable melodies, reflecting the rebellious spirit of 1920s and 30s European Kabarett.



Photo of 3 on a Match Stage Performance

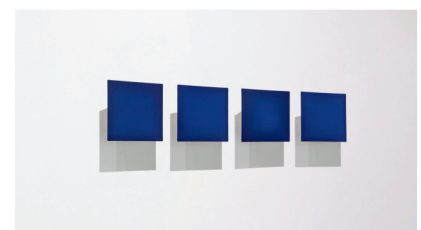
SATURDAY, SEPTEMBER 27, 2 PM

## Closing Conversations: Abstracting Nature

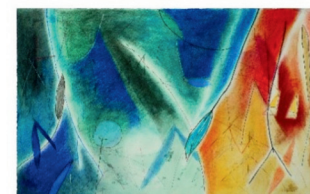
Join us for the final discussion on *Abstracting Nature*, featuring painter and mixed media artist Emmi Whitehorse, printmaker Yoshiko Shimano, and interdisciplinary artist Marietta Patricia Leis, whose works often include poetry or dance. This concluding conversation will explore how each artist uses abstraction to share their deep stories and personal connections with the environment. The event promises a rich dialogue that delves into the intricate relationships between art, nature, and abstraction. This program is funded in part by the Chicago Woodman Foundation.



Yoshiko Shimano, ECOLOGY IN EDO (Study from Ogata Korin), 2011, woodcut, monoprint, silkscreen and linoleum cut, 81 x 162 in., collection of artist



Marietta Patricia Leis, Breathless, 2014, oil on wood, each: 8 x 8 x 3.5 in. (20.3 x 20.3 x 8.9 cm), Albuquerque Museum, museum purchase, PC2022.38.1-4



Emmi Whitehorse, Yei Retires To Mt. Taylor, 1985, pastel on Arches paper on canvas, 32 x 48 1/2 in., Albuquerque Museum, museum Purchase, PC1987.33.1



# PROGRAMS & EVENTS

## EVENTS AT CASA SAN YSIDRO

973 Old Church Road, Corrales, NM 87048 | 505-898-3915

**SATURDAY, SEPTEMBER 27 &  
SUNDAY SEPTEMBER 28, 10 A.M. - 4 P.M.**

### Harvest Festival

Casa San Ysidro participates with the Village of Corrales in celebrating a weekend full of festivities that rejoices in the spirit of fall harvest. Casa San Ysidro hosts a variety of activities, music, and heritage craft demonstrations by traditional artists all across New Mexico. Performances by Acoma Pueblo Enchanted Dancers, Lara Manzanares and more. Casa San Ysidro houses a collection of rare artifacts in a historic adobe home and multi-acre setting.



Marvin Gabaldon, Photo by Roz Cohen

**SATURDAY, OCTOBER 11, 1-3 P.M.**

### Second Saturday: Time Travel

Time Travel is an immersive and interactive living history program that engages audiences by transporting them back in time. Audiences can interact with characters from the past through games, activities, arts, events, and more. This program offers learning processes in local heritage and history and creates opportunities for reflection on contemporary issues.



George Lausier and Michelle Frechette

**SATURDAY, OCTOBER 18, 9:30 A.M.-1:30 P.M.**

### Workshop: Blacksmith Basics

*Registration required through UNM Continuing Education*

The technique of heating metal and forging it into necessary implements and tools dates back over a thousand years. While most blacksmiths are self-taught, understanding the basic principles and techniques can speed up the learning process. Join us at Casa San Ysidro in Corrales for a hands-on opportunity to gain the fundamental knowledge necessary to begin making your own tools, knives, and decorative art.

**TUESDAYS - SATURDAYS: 10:30 A.M., NOON, & 1:30 P.M.**

### Tours of Casa San Ysidro

Purchase tickets online at [albuquerquemuseum.org](http://albuquerquemuseum.org)

**SATURDAY, OCTOBER 25, 1:30-3 P.M.**

### Heritage Spinning & Weaving: Weaving Techniques

*Purchase tickets online at [albuquerquemuseum.org](http://albuquerquemuseum.org)*

This class features lessons demonstrating winding and warping with table looms using wool yarn and traditional patterns for jerga and colcha textiles. Special emphasis will be on weaving a simple base fabric for colcha embroidery, called sabanilla cloth, a loosely woven wool fabric. Learn to make sabanilla fabric on a variety of simple looms using wool yarn. To purchase tickets for Heritage Spinning and Weaving, select the date of the class and the 1:30 PM time option. Upon selecting the 1:30 PM option, be sure to select the Heritage Spinning and Weaving option.



Myra Chang Thompson

## ONGOING EVENTS & PROGRAMS

**TUESDAYS - SUNDAYS: 2 P.M.**

### Museum Gallery Tours

Take an exciting and engaging tour of the Albuquerque Museum Galleries, where you'll see into its rich history and diverse exhibits. This experience promises to captivate your interest and provide a deeper understanding of the museum.

**WEDNESDAYS & SATURDAYS: 11 A.M.**

### Sculpture Garden Tours

*Weather permitting*

**TUESDAYS, THURSDAYS, FRIDAYS, & SUNDAYS: 11 A.M.**

### Old Town Walking Tours

*Weather permitting*

**SEPTEMBER 3, 19, OCTOBER 1, 17, 10 A.M. - 12 P.M.**

### Conversations with Collections

*Jim Baca Lobby*

On the first Wednesday and third Friday of each month, staff from the photo archives bring photographs from the permanent collection to spark curiosity, engage in conversation, and share enthusiasm



# EXHIBITIONS

For the most up-to-date exhibition information, visit [albuquerquemuseum.org](http://albuquerquemuseum.org)

THROUGH JANUARY 4, 2026

## *Modern Art and Politics in Germany 1910-1945:* Masterworks from the Neue Nationalgalerie, Berlin

This exhibition traces the German experience in modern art from the early twentieth century avant-gardes resisting the conservative imperial government, through the great artistic diversity of the democratic Weimar Republic, to the reactions from the artistic community against the National Socialist (Nazi) dictatorship. Some artists adapted to the regime in power, some fled the country, and others boldly resisted, sometimes with disastrous consequences.

*Modern Art and Politics in Germany* tells the story of powerful works of art, many of which were on display in the 1937 exhibition *Degenerate Art* where the National Socialists condemned modern art and ideas or were created in response to that exhibition. Paintings and sculptures by major German artists including Ernst Ludwig Kirchner, George Grosz, Max Beckmann, Hannah Höch, and Paul Klee are juxtaposed with other experimental European artists of the period including Pablo Picasso, Wassily Kandinsky, Giorgio de Chirico, and Salvador Dalí. The exhibition is organized by the Neue Nationalgalerie-SMB and is accompanied by a catalog. This exhibition is supported by an indemnity from the Federal Council on the Arts and the Humanities.



**Neue Nationalgalerie**  
Stiftung Preussischer Kulturbesitz



Christian Schad, *Sonja*, 1928, oil on canvas, 35.5 x 23.5 in., © Neue Nationalgalerie, Stiftung Preussischer Kulturbesitz, Berlin

THROUGH OCTOBER 5, 2025

## *Good Dogs: Faithful* *Friends from the Collections*

This exhibition offers an intimate and multifaceted exploration of how dogs have been portrayed as loyal companions, protectors, and beloved members of the family across cultures, time periods, and artistic traditions. Through a range of mediums and perspectives, it highlights the deep emotional bonds between humans and their canine counterparts. Visitors will leave with a renewed appreciation for the timeless connection shared between people and dogs.



Douglas Kent Hall, *Dogs, Near El Rancho*, 1986, gelatin silver print, gift of The FUND at the Albuquerque Community Foundation, PC1996.3.21

THROUGH MARCH 29, 2026

## *Beauty in the Breakdown*

Albuquerque Museum Photo Archives houses hundreds of glass plate negatives, each one of them deteriorating due to the chemical process that created them. *Beauty in the Breakdown* uncovers the reality of preserving a collection in constant decline, while highlighting the beautiful and fascinating ways the deterioration process occurs. Efforts to conserve these delicate artifacts reveal both the challenges and the unexpected beauty in their fragile state.



Cobb Studio, *Portrait of a Woman (detail)*, ca. 1900, Albuquerque Museum, PA1981.125.072

## FROM THE PERMANENT COLLECTION

### *Only in Albuquerque*

Our story is told through four galleries: Spirited, Courageous, Resourceful, and Innovative, all connected to a central gallery entitled *Our Land*.

### *Common Ground: Art in New Mexico*

Artwork from the permanent collection celebrates the diverse creativity of artists living in or influenced by this region.



# EXHIBITIONS



Joan Weisman, *Pyramide (detail)*, 1999, hand-stitched needlepoint tapestry, Albuquerque Museum, gift of Joan Weisman, PC2021.15.1.

THROUGH OCTOBER 12, 2025

## *Abstracting Nature*

This exhibition features the works of ten artists, who use the lens of abstraction to explore the deep stories and personal connections they share with the environment. Spanning more than seventy years of creative exploration, *Abstracting Nature* invites all who have felt a sense of peace or belonging in New Mexico's vast yet intimate landscapes to see them in new and imaginative ways. This exhibition is supported in part by the Chicago Woodman Foundation. Visitors will have the opportunity to experience a diverse array of artistic interpretations, from vibrant tapestries and dynamic sculptures to evocative paintings and thought-provoking installations. Each piece serves as a unique tribute to the intricate beauty and complexity of the natural world, encouraging introspection and dialogue about our relationship with the environment. The artists' collective vision not only emphasizes the aesthetic wonder of nature but also prompts reflection on its fragility and the urgent need for conservation. As guests wander through the gallery, they are encouraged to engage with the artworks, ponder the stories behind them, and perhaps even draw inspiration for their own creative journeys.

THROUGH NOVEMBER 2, 2025

## *Open to All: A Century of Access at Special Collections Library*

This exhibition places the Special Collections Library within the broader landscape of libraries across the United States, highlighting their vital role as inclusive, democratic spaces committed to serving all members of the public. As libraries nationwide face growing challenges—ranging from book bans and funding limitations to issues of accessibility and equity—this exhibition explores the enduring mission of libraries to provide open and free access to information, resources, and safe gathering spaces for everyone, regardless of gender, age, ability, citizenship status, or housing situation. Through historical context, community stories, and visual materials, the exhibition celebrates the resilience and adaptability of public libraries in the face of social and political pressures. Organized by the Albuquerque Museum in collaboration with the Public Library of Albuquerque-Bernalillo County, the exhibition invites reflection on the essential role libraries continue to play in supporting education, civic engagement, and social inclusion.



Barnes & Caplin, *Book Stacks in Main Library*, 1949, gelatin silver print, Albuquerque Museum, gift of Albuquerque National Bank, PA1980.185.398



Nanibah "Nani" Chacon, *Erase the Horse...*, 2025, string and polyacrylic paint, lobby installation at Albuquerque Museum

THROUGH APRIL 5, 2026

## *Nanibah Chacon: Erase the Horse...*

Nanibah "Nani" Chacon is a Diné (Navajo) and Chicana artist, painter, and muralist whose personal philosophy is that art should be accessible and a meaningful catalyst for social change. Her work often centers Indigenous voices, matriarchal narratives, and community-based storytelling. Albuquerque Museum's Visiting Artist program is generously funded by the Frederick Hammersley Fund for the Arts at the Albuquerque Community Foundation.



# ALBUQUERQUE MUSEUM FOUNDATION



## BECOME A MEMBER!

Joining the Albuquerque Museum Foundation gives you more opportunities to experience the art, history, events, and educational programming offered at the Albuquerque Museum. Your annual membership entitles you to free admission, invitations to exclusive member previews, and discounts. Learn more at [abqmf.org/membership](http://abqmf.org/membership).

### Membership Levels

Seniors (65+).....	\$50
General.....	\$75
Friend.....	\$100
Supporter.....	\$250
Benefactor.....	\$500

### Patrons' Circle

Bronze.....	\$1,000
Silver.....	\$2,500
Gold.....	\$5,000
Platinum.....	\$10,000

## MEMBERS ONLY EVENTS

**MONDAY, SEPTEMBER 8, 2 - 3 P.M.**

### Patrons' Circle Exclusive: Conversations with Curators

A Patrons' Circle series offers members exclusive conversations with the creative minds behind the Albuquerque Museum's collections and exhibitions. Enjoy a relaxed afternoon behind closed doors, with J. Hartke, Curator of Digital Collections, Albuquerque Museum gaining insights from curators, asking questions, and connecting with fellow art, history, and culture enthusiasts.

**WEDNESDAY, SEPTEMBER 17, 6 - 7:30 P.M.**

### Museum Trivia: A FUNd-raising Experience

*Outpost1706 301 Romero St NW, Suite 205, Albuquerque*

Albuquerque Museum Foundation and Outpost 1706 present a fun evening supporting a great cause. Ticket includes one drink coupon and entry to the trivia game. Members: \$30 General Public: \$40

**SATURDAY, SEPTEMBER 27, 4 - 7 P.M.**

### Garden Party

*Private venue in North Valley; location disclosed after ticket purchase.*

This event celebrates the opening of Albuquerque Museum's fall exhibition, *Modern Art and Politics in Germany, 1910 - 1945*. Join us for an evening inspired by the era's bold artistic movements and cultural legacy. Signature craft beer and hors d'oeuvres. Live jazz music by Sweet Jazz. READ MORE AT [abqmf.org/garden](http://abqmf.org/garden) Tickets \$250

### NEVER WANT TO MISS AN EXCLUSIVE EVENT?

Sign up for auto-renewing memberships today on our website, visit the Museum Store, or give us a call to keep your access year around!







# Albuquerque Museum and Casa San Ysidro Educational Youth Outreach

July 2024 - June 2025



- 363 classes and 217 buses visited through Magic Bus
- 86% of students were from schools in Albuquerque
- 537 at-risk youth served through Art Matters
- 352 children and adults attended our Museum School Through Art with Class, 178 second-fifth graders from Alvarado Elementary School created artwork with Eliza Naranjo Morse (Santa Clara Pueblo).
- Provided four full scholarships through the Reggie Behl Award for students to attend Museum School
- Hosted weekly Family Art workshops – as well as at the Museum's Third Thursday after-hours events and Second Saturdays at Casa San Ysidro
- Our guides donated over 14,000 hours as they led tours for student visitors!



## Schools:

- Public - 84%
- Private - 14%
- Other - 2%
  - Title I - 71%

## Grades:

- Elementary - 72%
- Middle - 11%
- High School - 13%
- Pre-K - 4%

Additional groups included youth from Pueblo of Isleta Library, Mescalero Prevention Program, Project Venture, YMCA of Central NM, and more!



- 64% of schools made statements of need (language and/or sensory) when requesting a tour.
- 15% of school tours were fully in Spanish.
- 55% of the teachers make these visits a part of their annual curriculum.
- 71% of teachers agreed that other schools would benefit from visiting us too!

Multiple educational video lessons were also made available and used by schools and community groups.



## Post surveys show:

- 97% - Teachers are very likely to use our resources again.
- 95% - Students had more enthusiasm about art and/or history after participating.
- 91% - Students experienced a welcoming and inclusive environment.
- 79% - Students increased their cultural awareness, can better understand other viewpoints, and gained a broader world view.
- 79% - Students learned about subjects that built on our school/state curriculum.

Thank you to the many individuals, sponsors, and foundations that made this outreach possible, including: American Home Furniture & Mattress, GRoW @ Annenberg, Cherry Picker Foundation, Nancy Ann Mellen Foundation, and Walmart

Albuquerque Museum Foundation underwrites the annual cost for thousands of students to connect with art and history exhibits at the Albuquerque Museum, giving many children their only chance to visit a museum. Your donation provides free admission and complimentary buses, supporting the creation of virtual educational resources, and targeting support to those most at risk.

**GIVE TODAY!**

[albuquerquemuseumfoundation.org/yep/](https://albuquerquemuseumfoundation.org/yep/)



aM

# Albuquerque Museum FOUNDATION

P.O. Box 7006  
Albuquerque, NM 87194

NON-PROFIT ORG.  
U.S. POSTAGE PAID  
ALBUQUERQUE, NM  
PERMIT NO. 446

## SPECIAL THANK YOU TO OUR PREMIER CORPORATE SPONSORS



## FOUNDATION SUPPORT FROM



## ALBUQUERQUE MUSEUM

200 Mountain Rd. NW  
Albuquerque, NM 87104  
505-243-7255  
albuquerquemuseum.org

## ALBUQUERQUE MUSEUM FOUNDATION

505-677-8500  
abqmf.org

## MUSEUM HOURS

Tuesday - Sunday  
9 A.M - 5 P.M.

## MUSEUM STORE HOURS

Tuesday - Sunday  
10 A.M - 5 P.M.

## FOUNDATION HOURS

Monday - Friday  
9 A.M - 5 P.M.

## CONNECT WITH US!



@abqmuseum  
@abqmuseumfoundation